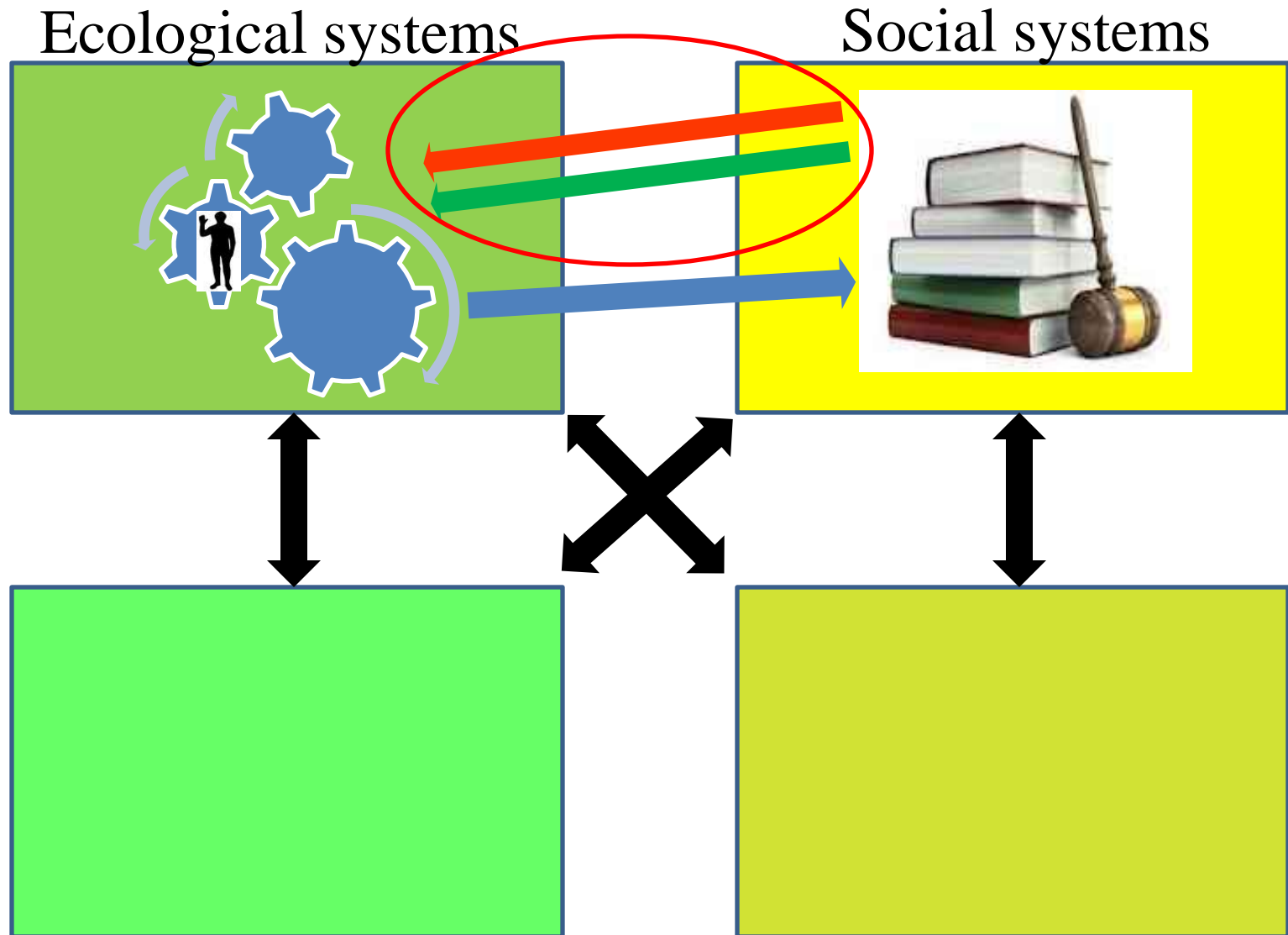


Human Dimensions of Marine Protected Areas

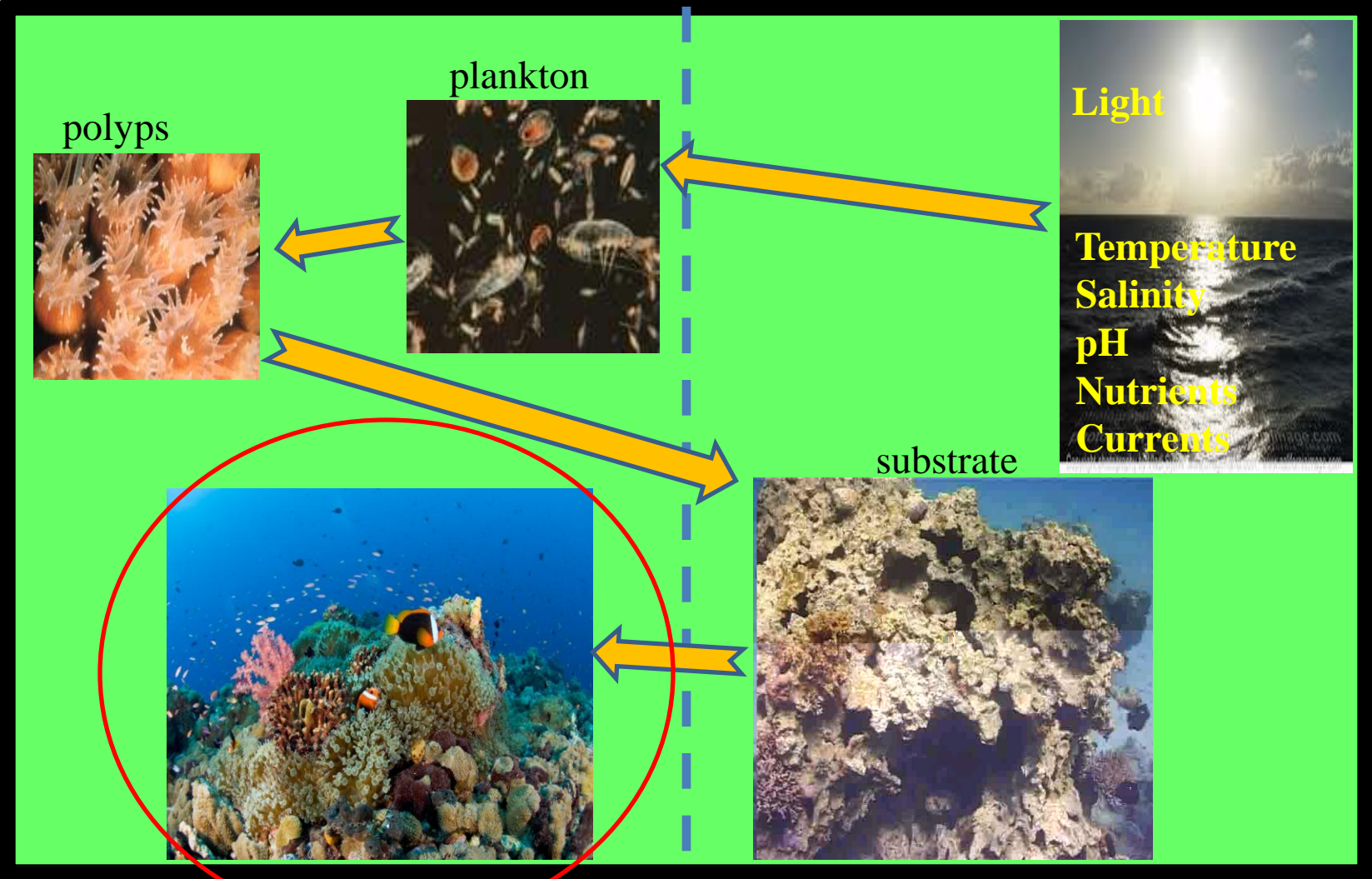


Jeffrey Wielgus, PhD
State of the Gulf of Mexico Summit
Houston, December 4-8, 2011

Ecosystem Based Management



Connections within the ecosystem



Connections between ecological and social systems

Impact is mediated by governance

Services

Fishing

Recreation

Existence value

The presence of common values and positive relationships between stakeholders is fundamental for the effective governance (values, policies, laws, and institutions) of joint ecological-economic systems and the well-being of the stakeholders.

‘Broadly speaking, **social capital** is a set of values and relationships created by individuals in the past that **can be drawn on in the present and future** to facilitate overcoming social dilemmas’.

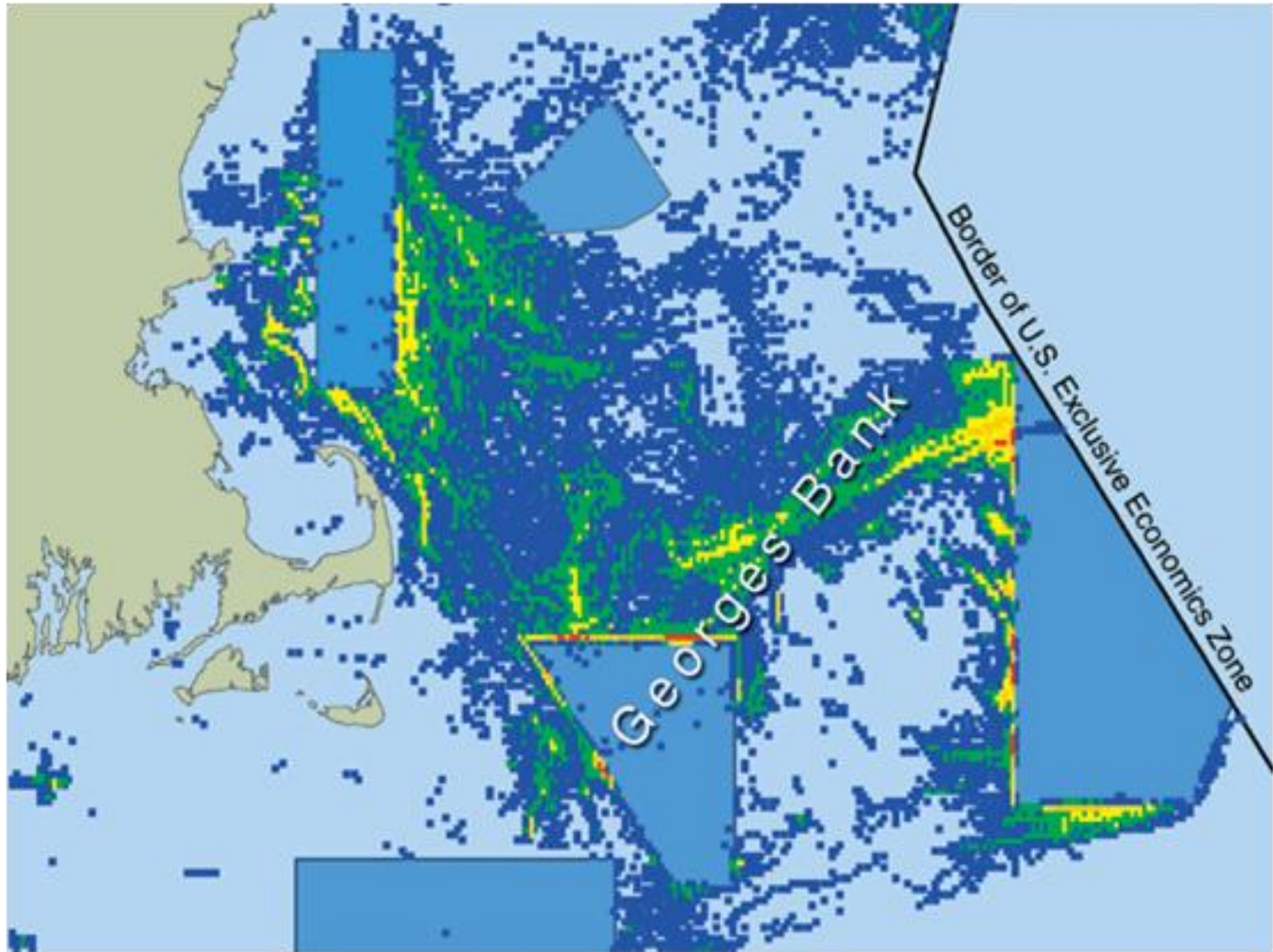
(Ahn and Ostrom, 2002)

Indicators of social capital: number of cooperative arrangements; trust.

Social capital is a powerful tool to confront a wide spectrum of ecological and social challenges.

How can social capital be built?

Common goals create social capital



Source: Woods Hole Oceanographic Institution

Marine Protected Areas (MPAs) build social capital





Marine Protected Areas (MPAs) build social capital

In the United Kingdom:

“Considerable social capital has been built through the Marine Conservation Zone Project [part of the Marine Coastal Access Act] planning process, with the working relationships between stakeholders improving significantly, and there are many cases where those who previously would not have spoken to one another, now do.”

(Hastings, 2011)

Marine Protected Areas (MPAs) build social capital

In the United States:

“The Science Advisory Team (SAT) members served as educators, advisors, and evaluators. They also advanced MPA science through model development and refinement of science criteria and added significantly to social capital”.

(California Marine Life Protection Act Initiative
Blue Ribbon Task Force, 2008)

Marine Protected Areas (MPAs)
build social capital

And what about the Gulf of Mexico?

Gulf of Mexico Marine Protected Area Network

“At-a-Glance” Site Profiles

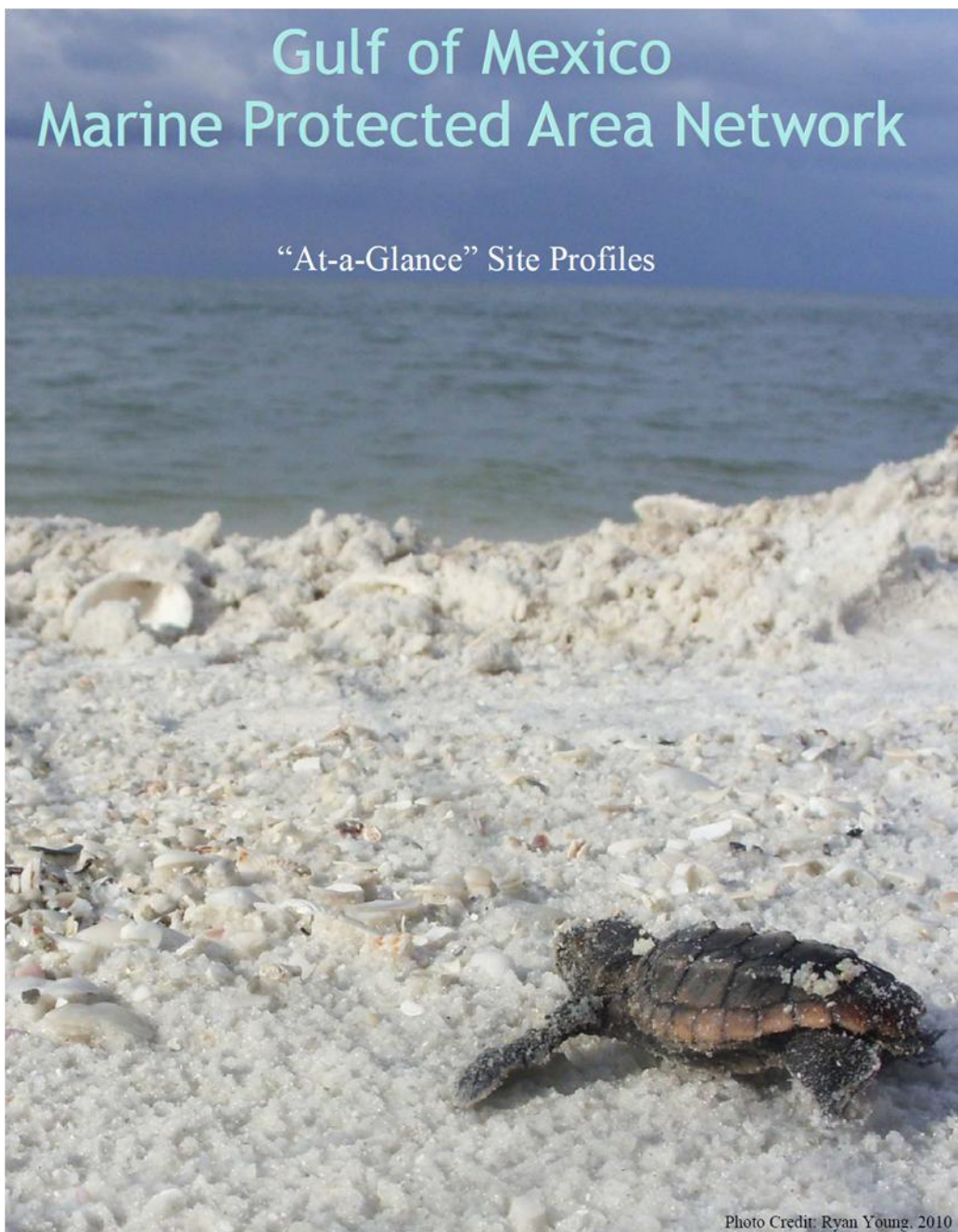
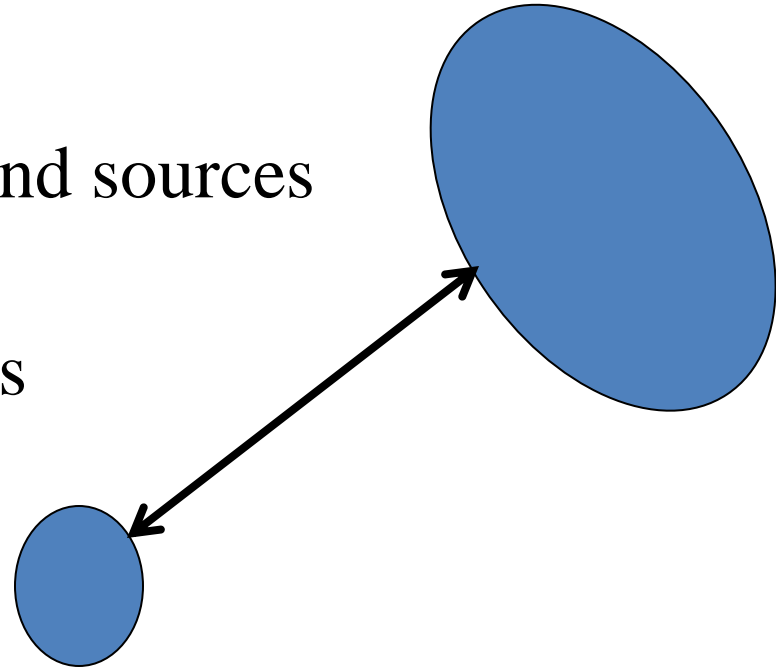


Photo Credit: Ryan Young, 2010

Some Important Considerations

■ Ecological

- Connectivity between sinks and sources of larvae and biomass
- Diversity of protected habitats
- Minimum population sizes



■ Social

- MPA network must build **social capital** by identifying and addressing common goals and encouraging stakeholder participation.

A vibrant underwater scene featuring a diverse coral reef. The foreground is dominated by large, flat, yellowish-green coral structures. In the middle ground, a school of small, silver fish with dark stripes swims towards the left. The background shows more varied coral species, including branching and rounded forms, under clear blue water. The text "Thank you!" is overlaid in the center in a white, serif font.

Thank you!